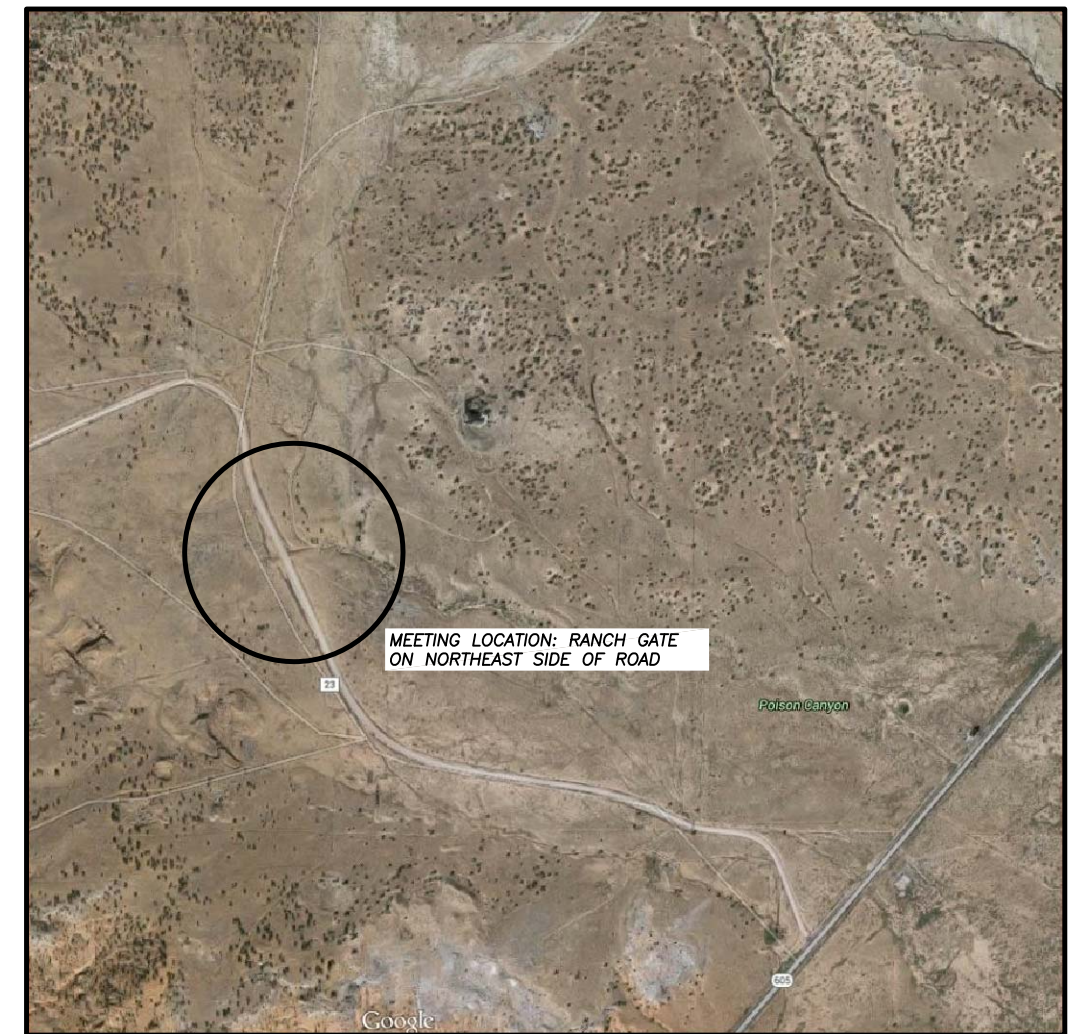
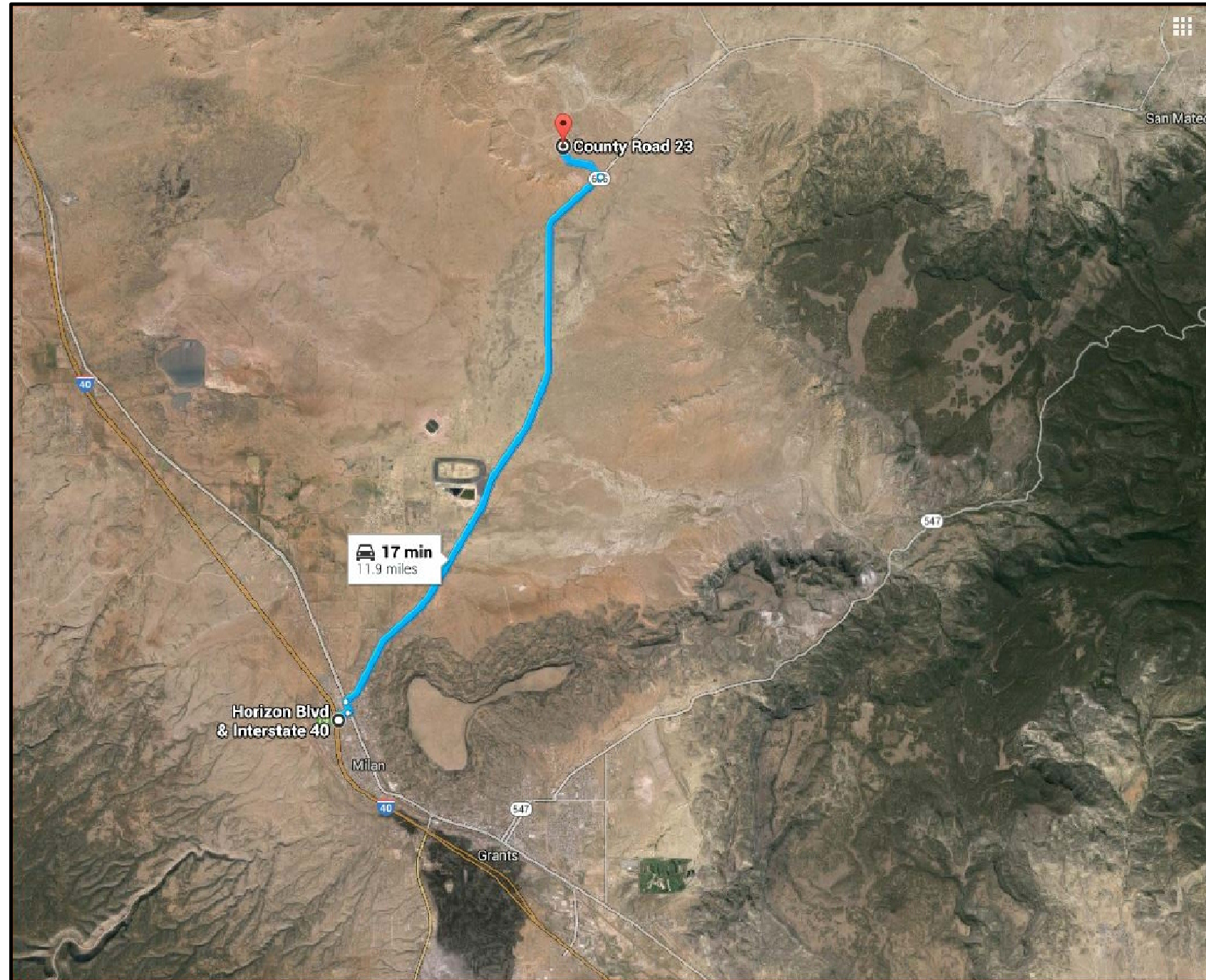


# DRAWINGS FOR THE GRANTS - URANIUM PHASE III SAFEGUARD & RECLAMATION PROJECT MC KINLEY COUNTY, NEW MEXICO JULY 2015



### INDEX OF FIGURES

COVER SHEET	1
PROJECT OVERVIEW DRILL HOLE LOCATIONS	2
SAFEGUARDING FEATURES – NORTH AREA	3
SAFEGUARDING FEATURES – SOUTH AREA	4
TYPICAL PLUG CLOSURE DRILL HOLE	5
EARTH FILL SEAL SHAFT AND PIT CLOSURE	6
DETAIL BARBARA J 2 BAILEY/FIFE MAP	7
DETAIL BARBARA J 1 & 3 AREA MAP	8
DETAIL BARBARA J 3 MAP	9

NOT DRAWN TO SCALE  
FROM "GOOGLE MAPS"

COVER.DWG PLOT SCALE 1 = 1


  
**NEW MEXICO**  
**Abandoned Mine Land Program**  
**MINING AND MINERALS DIVISION**  
**ENERGY, MINERALS AND NATURAL RESOURCES DEPARTMENT**  
**SANTA FE, NEW MEXICO**

PROJECT NO. EMNRD-MMD-2015-06