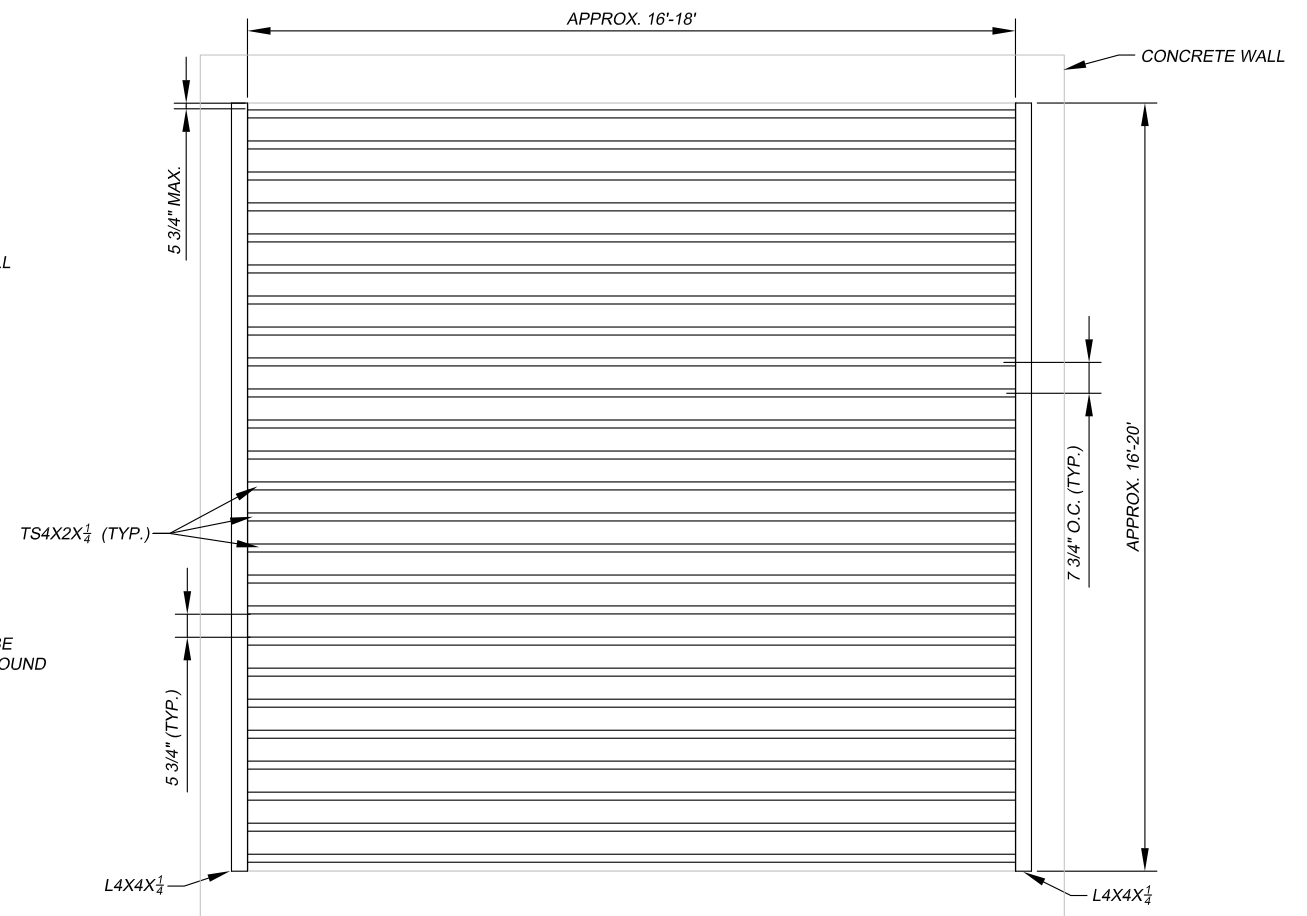
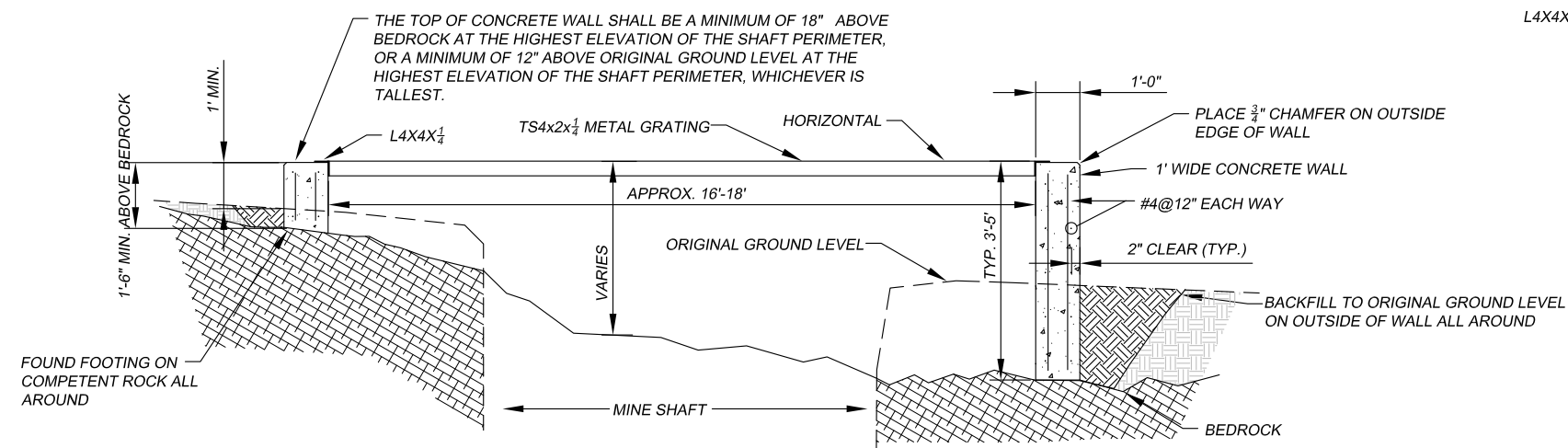


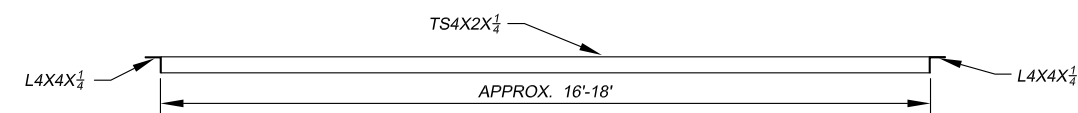
ELEVATION (WALL)
GRATING NOT SHOWN



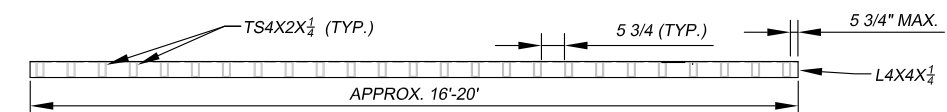
ELEVATION (GRATING)



SECTION (WALL AND GRATING)
NORTH FACING



SECTION (GRATING)
NORTH FACING



SECTION (GRATING)
WEST FACING

NOTE: THIS IS A TYPICAL DRAWING FOR CLOSURES TO BE BUILT OVER 3 DIFFERENT SHAFTS (SHAFTS 598-07, 22 AND 29). THE LENGTH OF CONCRETE WALL AND GRATING MAY VARY BY A FEW FEET FOR EACH CLOSURE.

GENERAL NOTES:

1. THIS DRAWING SHOWS THE GENERAL SHAPE AND APPROXIMATE PROFILE OF THE SHAFT AT THE INTENDED LOCATION OF THE CLOSURE. USE THE DRAWING AS A GUIDE FOR FIELD LAYOUT OF THE CLOSURE. FIELD VERIFY DIMENSIONS PRIOR TO FABRICATION.
2. TUBULAR STEEL, STEEL PLATES, AND SHAPES SHALL BE WEATHERING STEEL AS SPECIFIED. WELD ALL JOINTS. JOINTS SHALL BE TIGHT SO THAT MOISTURE CANNOT ENTER BETWEEN PLYS OF MATERIAL. ROUND OR CHAMFER ALL SHARP EDGES AND CORNERS.
3. THE CONTRACTOR SHALL REMOVE TREES, VEGETATION, FENCING AND LOOSE MATERIAL AS NECESSARY TO INSTALL THE CONCRETE WALL ON SOLID BEDROCK. DISPOSE OF DEBRIS AT THE DIRECTION OF THE PROJECT MANAGER.
4. PLACE A 3/4" CHAMFER ON THE OUTSIDE EXPOSED EDGES OF CONCRETE WALL.
5. TOLERANCES ON THE CENTER--TO-CENTER DIMENSIONS BETWEEN POSTS SHALL BE $\pm 1/16"$.
6. PLACE A SURVEY MARKER, PROVIDED BY THE PROJECT MANAGER, INTO THE CONCRETE WALL SOON AFTER POURING.
7. GRADE FILL AROUND STRUCTURE TO MINIMIZE EROSIONAL FORCES FROM UPSLOPE, AS DIRECTED BY THE PROJECT MANAGER.

CAUTION - THIS PROJECT REQUIRES CONSTRUCTION WORK NEAR HAZARDOUS AND UNPROTECTED MINE OPENINGS. THE CONTRACTOR SHALL BE RESPONSIBLE FOR THOROUGHLY INVESTIGATING THE SITE CONDITIONS AND SCHEDULING EQUIPMENT, EQUIPMENT OPERATORS, OPERATIONS, PERSONNEL AND SAFETY PROCEDURES TO PREVENT ACCIDENTS AND INJURIES.

ABANDONED MINE LAND PROGRAM MINING AND MINERALS DIVISION ENERGY, MINERALS AND NATURAL RESOURCES DEPARTMENT		
SCALE: 1/4" = 1'-0"	SHAFTS 598-07, 22, 29	DRAWN BY: JTG
DATE: OCT. 26, 2012		REVISED:
WALL AND GRATING DETAILS		
Cleveland Mine Safeguard Project		DRAWING NUMBER: FIGURE 8