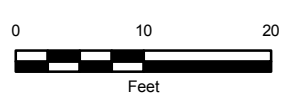




LEGEND

- █ Historic Workings
- Primary bulkhead grout holes
- Secondary bulkhead grout holes



NOTE(S)

1. PRIMARY GROUTING SEQUENCE HOLES 1-14 FOR MINE WORKINGS BULKHEAD. HOLES 15-27 SECONDARY FILL-IN. PRIMARY GROUT HOLES ON A 10'X10' GRID PATTERN.
2. USE DH#S 2, 5 AND 9 AS OBSERVATION AND MONITOR WELLS.
3. LOCATION OF HISTORIC WORKINGS ARE APPROXIMATE.

REFERENCE(S)

BASEMAP: GOOGLE EARTH
HISTORIC WORKINGS FROM 1933 MINE MAP

CLIENT
NEW MEXICO AML PROGRAM

PROJECT
ALLISON PHASE III EMERGENCY PROJECT



CONSULTANT	YYYY-MM-DD	8/7/2017
	DESIGNED	JP
	PREPARED	KRK
	REVIEWED	JAC
	APPROVED	JAC

TITLE
FIGURE 5: BULKHEAD GROUTING PLAN

PROJECT NO.
1670137

REV.
A

FIGURE
5

IF THIS MEASUREMENT DOES NOT MATCH WHAT IS SHOWN, THE SHEET SIZE HAS BEEN MODIFIED FROM ANSI B