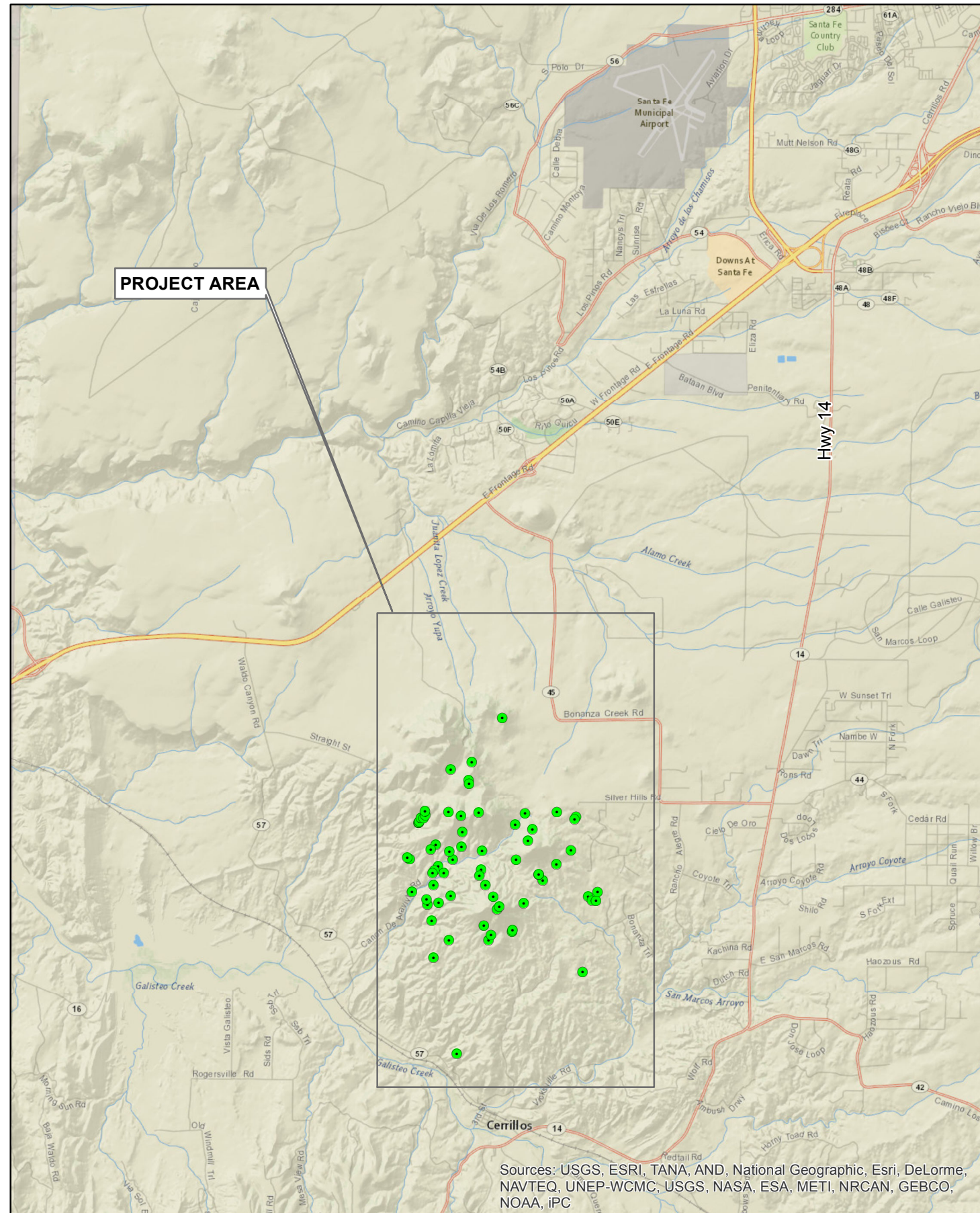
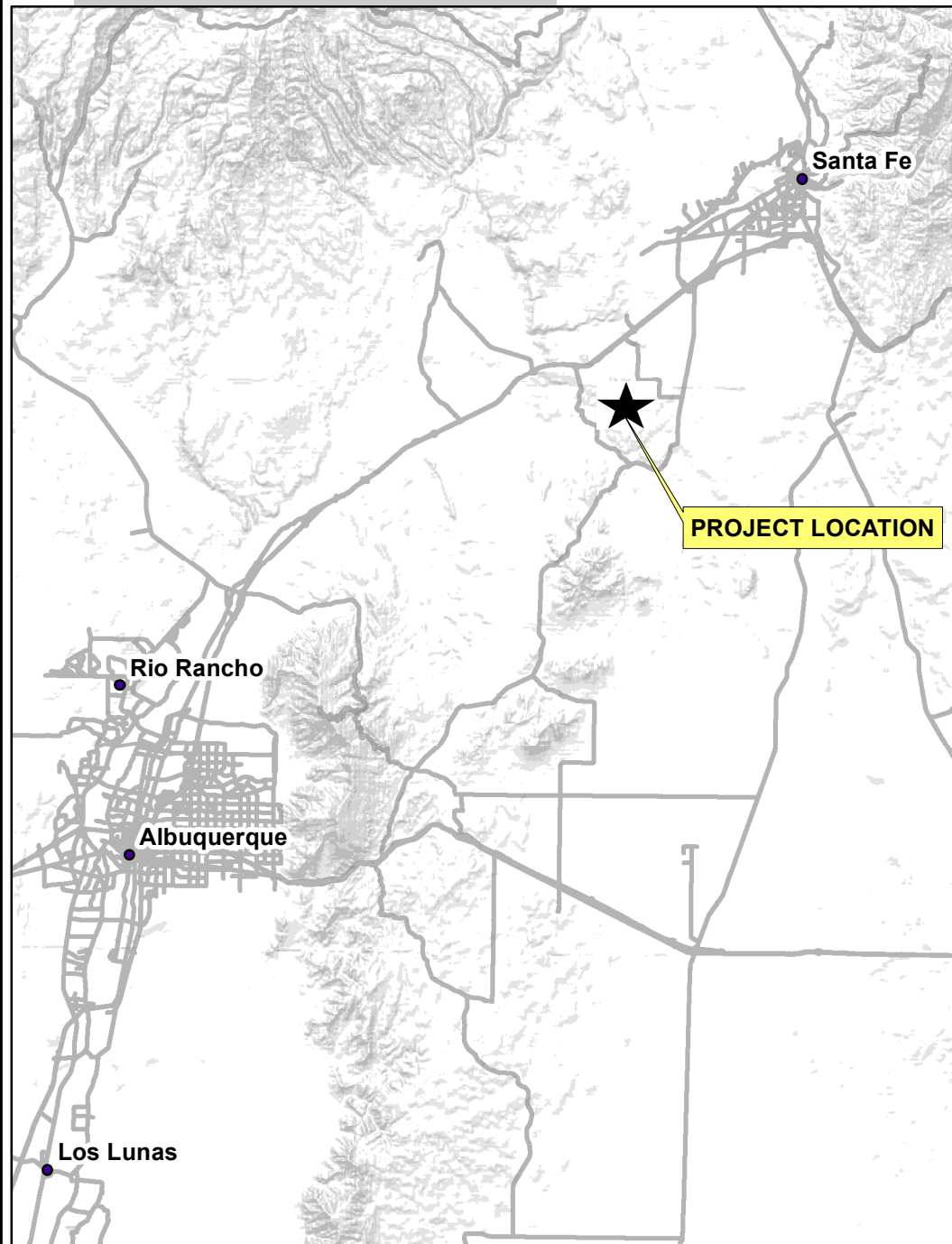
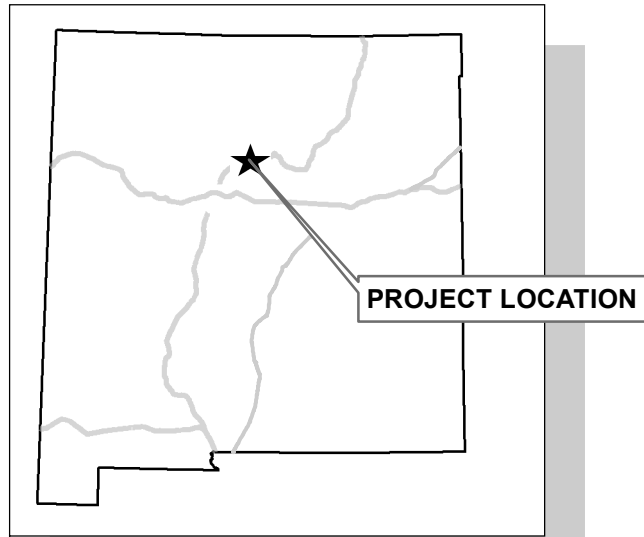


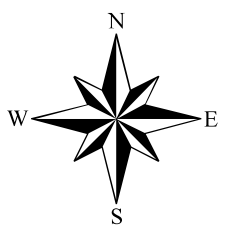
CERRILLOS CENTRAL/BONANZA CREEK MINE SAFEGUARD PROJECT - PHASE III

CERRILLOS, NEW MEXICO
PROJECT LOCATION



INDEX OF FIGURES:

1. TITLE SHEET
2. SITE LOCATION MAP
3. FEATURE 6-30 - CUPOLA CLOSURE
4. FEATURE 6-30 - CUPOLA DETAILS
5. FEATURE 6-37 - CUPOLA CLOSURE
6. FEATURE 6-37 - CUPOLA DETAILS
7. FEATURE 6-92 - CULVERT WITH BAT GATE
8. FEATURE 7-20 - CULVERT WITH BAT GATE
9. FEATURE 8-11 - CULVERT WITH BAT GATE
10. REMOVABLE CROSSBAR LOCK DETAIL
11. SWINGING HINGED HATCH DETAILS
12. POLYURETHANE FOAM PLUG CLOSURE
13. STEEL MESH CLOSURE
14. WELDED WIRE FENCE DETAILS
15. METAL PICKET FENCE DETAILS
16. TYPICAL SHAFT BACKFILL DESIGN
17. TYPICAL ADIT BACKFILL DESIGN



Sources: USGS, ESRI, TANA, AND, National Geographic, Esri, DeLorme, NAVTEQ, UNEP-WCMC, USGS, NASA, ESA, METI, NRCAN, GEBCO, NOAA, IPC

NEW MEXICO
ABANDONED MINE LAND PROGRAM
MINING & MINERALS DIVISION
ENERGY, MINERALS AND NATURAL RESOURCES DEPT.
SANTA FE, NEW MEXICO
PROJECT NO. EMNRD-MMD-2015-01