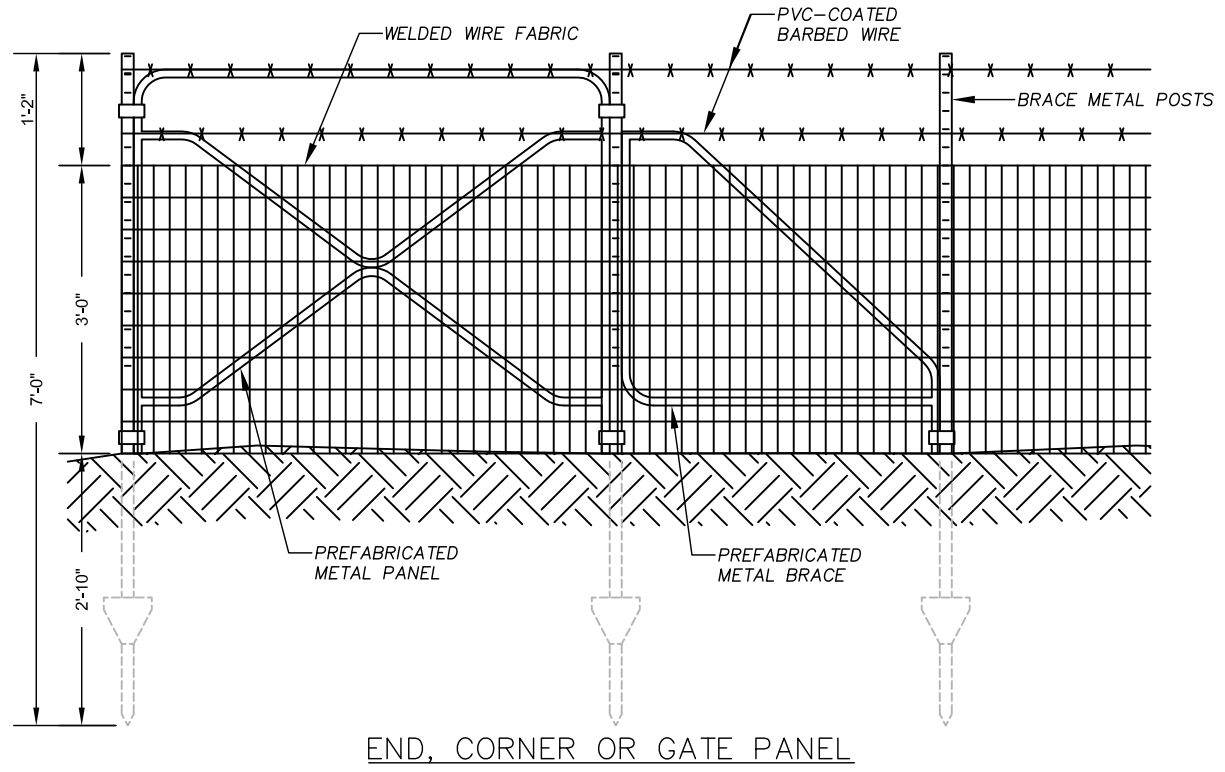


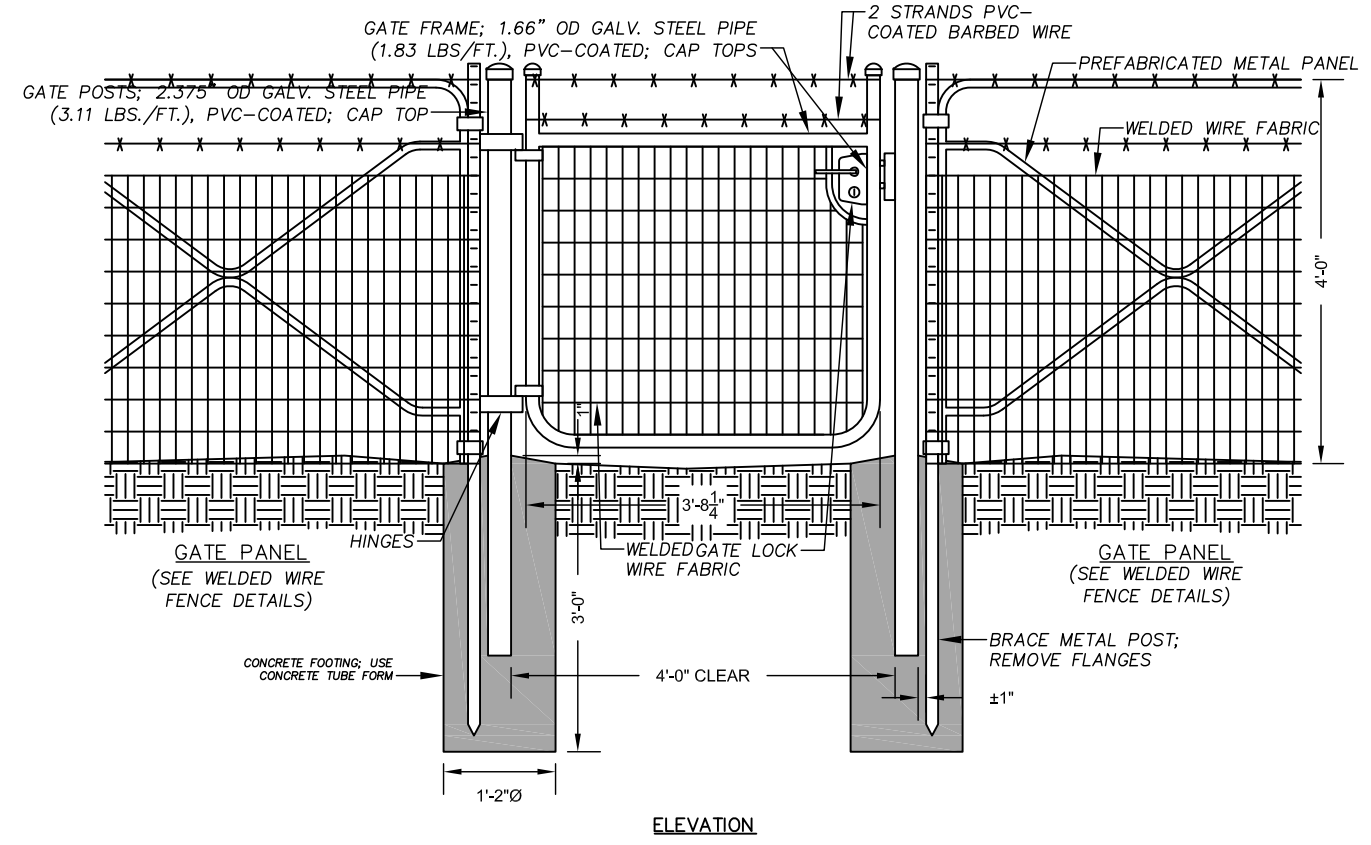
CAUTION - THIS PROJECT REQUIRES CONSTRUCTION WORK IN, AROUND, AND OVER HAZARDOUS AND UNPROTECTED MINE SHAFTS, STOPS, ADITS, AND OTHER OPENINGS WHICH MAY BE OPEN TO THE SURFACE OR HIDDEN FROM VIEW BY TRASH, DEBRIS, OR THIN AND UNSTABLE LAYERS OF SURFACE MATERIALS OR ROCK. THE CONSTRUCTOR SHALL BE RESPONSIBLE FOR THOROUGHLY INVESTIGATING THE SITE CONDITIONS AND SCHEDULING EQUIPMENT, EQUIPMENT OPERATIONS, PERSONNEL AND SAFETY PROCEDURES TO PREVENT ACCIDENTS AND INJURIES.

TYPICAL

WELDED WIRE FENCE LOCATIONS			
LOCATION	MINE OPENING (FT)	APPROX. FENCE NEEDED (FT.)	NO. OF GATES NEEDED
6-111	7' x 5'	42	1
6-112	7' x 7'	44	0
V (IO 3)	7' x 5'	42	0
P (6-81)	8' x 8'	48	0

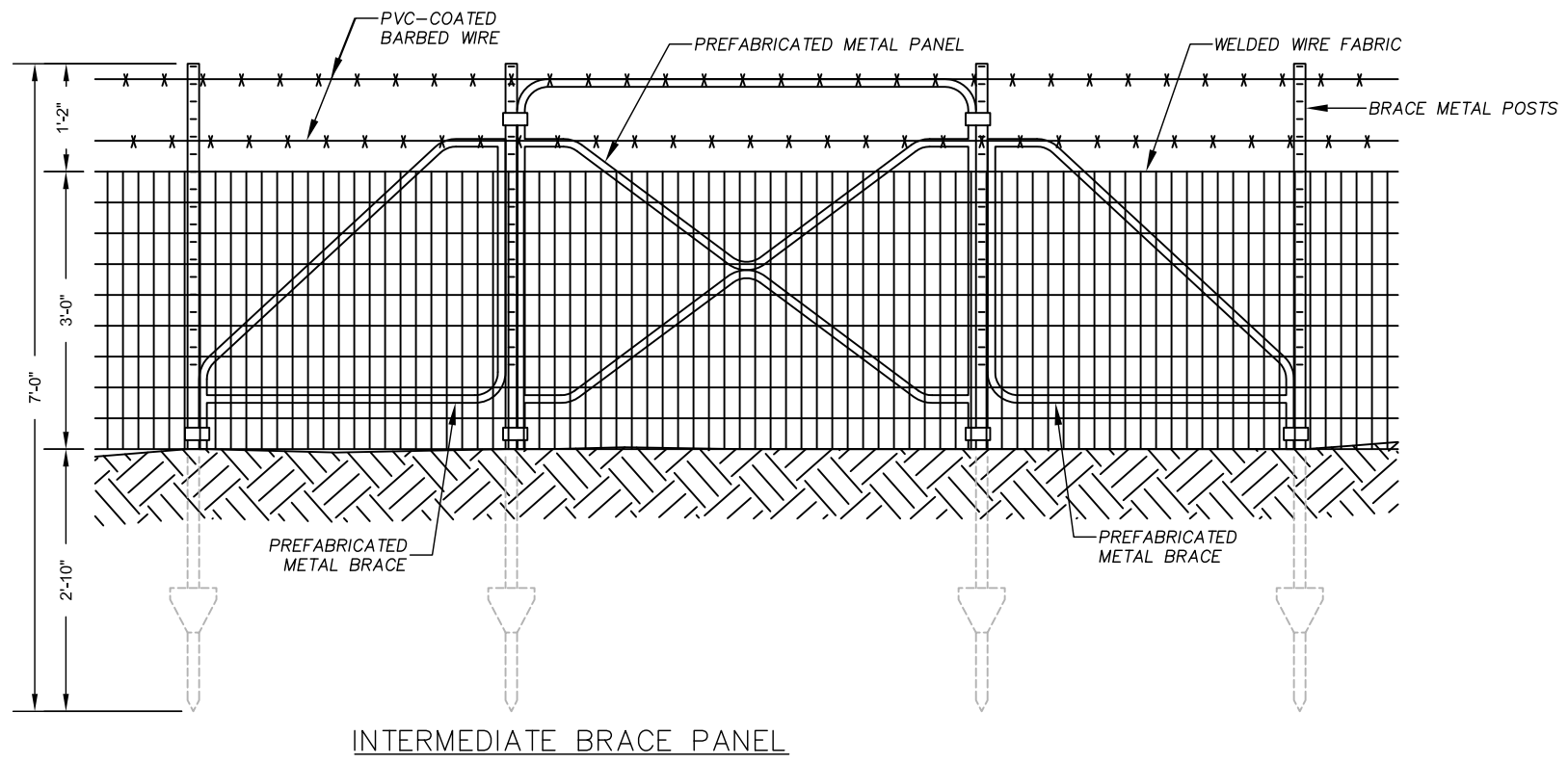


NOTE: RIGHT SIDE PANEL IS SHOWN. LEFT SIDE PANELS AT ENDS, CORNERS AND GATES SHALL BE OPPOSITE. PLACE PANELS AND BRACES ON THE INSIDE OF THE FENCE ENCLOSURE.



WELDED WIRE GATE DETAILS

- GENERAL NOTES:
- USE CLAMPS PROVIDED BY THE MANUFACTURER TO ATTACH METAL POSTS TO PANELS AND BRACES. INSTALL BRACE PANELS ACCORDING TO MANUFACTURER'S INSTRUCTIONS. PREFABRICATED PANELS AND BRACES SHALL BE 'EASY FENCE' BY D-C INDUSTRIES OR EQUIVALENT.
  - RUN FENCE IN STRAIGHT LINES BETWEEN END AND CORNER POSTS. AVOID ACUTE ANGLES (LESS THAN 90°) AT FENCE CORNERS.
  - IN SOLID ROCK, SET POSTS INTO HOLES ONE-HALF INCH LARGER IN DIAMETER THAN THE MAXIMUM CROSS-SECTIONAL DIMENSION OF THE POSTS. DRILL HOLES TO A DEPTH OF AT LEAST THREE TIMES THE HOLE DIAMETER.
  - GATE LOCATION SHALL BE DETERMINED IN THE FIELD BY THE PROJECT MANAGER.
  - ALL GALVANIZED METAL SHALL BE PAINTED WITH "NATINA STEEL" BY NATINA PRODUCTS (WWW.NATINAPRODUCTS.COM) OR AN APPROVED EQUIVALENT. APPLICATION RATE SHALL BE AS DIRECTED BY THE MANUFACTURER.
  - GATE LOCK SHALL BE SELF-LOCKING "LOCINOX," OR APPROVED EQUIVALENT (AVAILABLE FROM HOOVER FENCE CO. AS CHAIN LINK GATE LOCK "HA504-PLUS," (800) 355-2335, WWW.HOOVERFENCE.COM).
  - THE PROJECT MANAGER SHALL DETERMINE THE LAYOUT OF THE FENCE AND PROXIMITY TO THE MINE OPENING. AS A GENERAL RULE, THE FENCE BE OFFSET FROM OPENING BY THREE TO FOUR FEET.



**ABANDONED MINE LAND PROGRAM**  
 MINING AND MINERALS DIVISION  
 NEW MEXICO ENERGY, MINERALS, AND NATURAL RESOURCES DEPARTMENT

SCALE: 1/2"=1'-0"      VARIOUS LOCATIONS      DRAWN BY: JAK  
 DATE:      REVISED BY: MWT

WELDED WIRE FENCE DETAILS

FILE:      CERRILLOS CENT./BONANZA CREEK MINE SAFEGUARD PROJECT - PH. III      FIGURE: 14