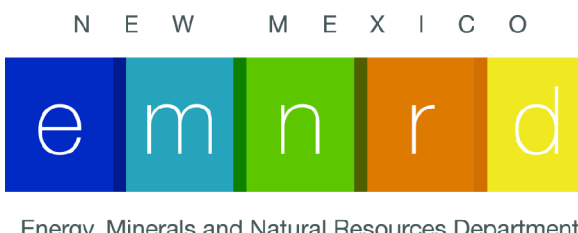
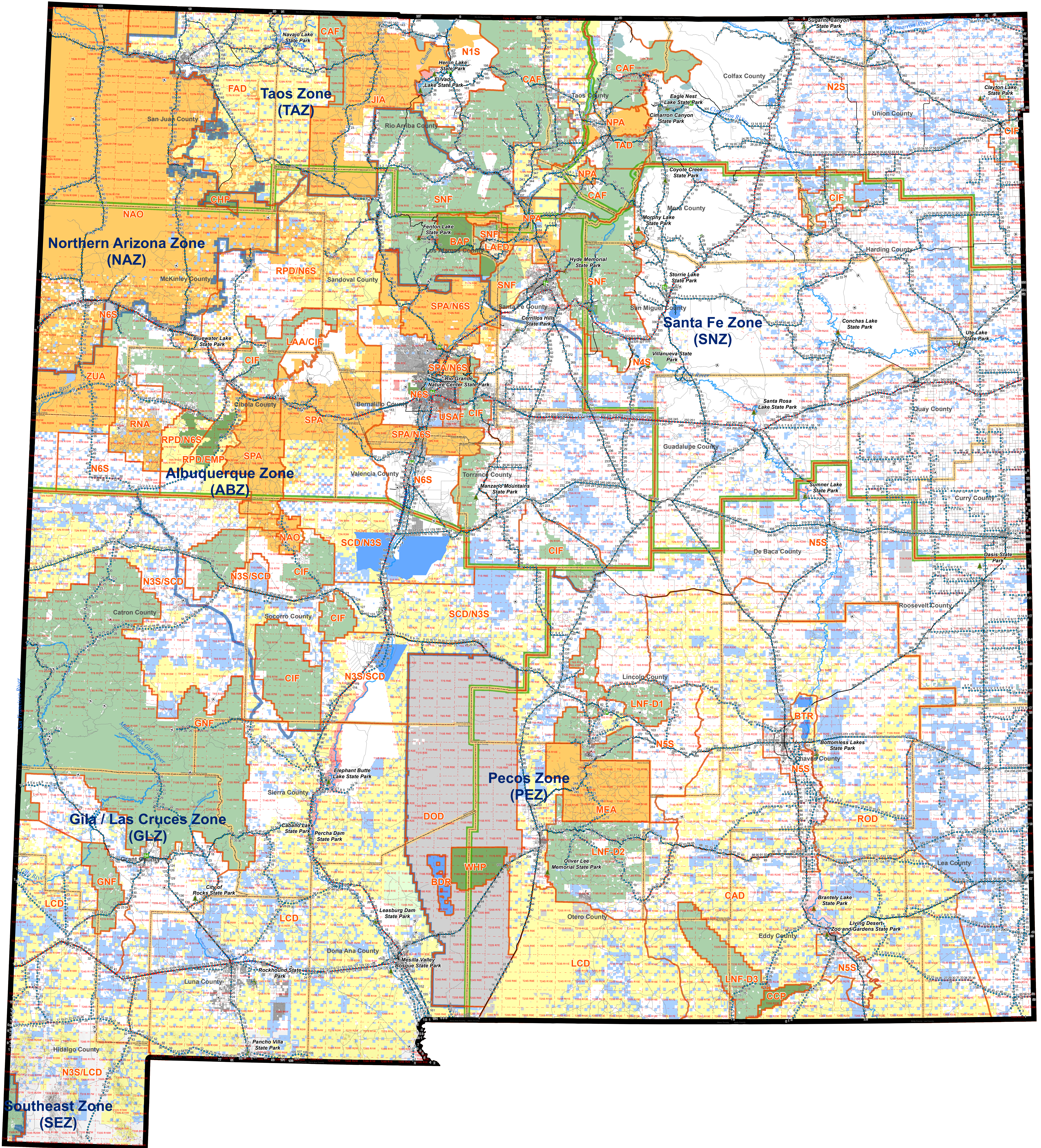
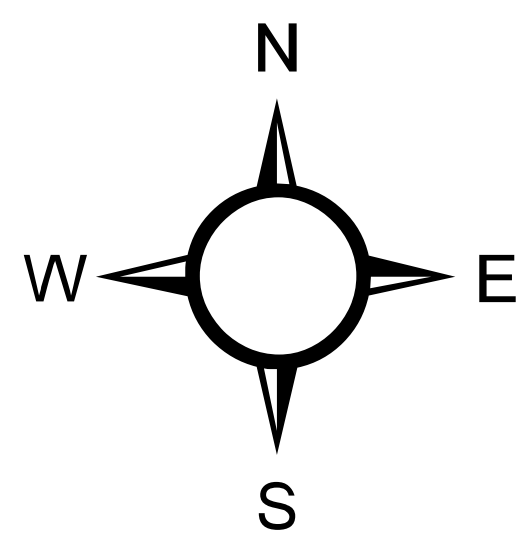


# NEW MEXICO INITIAL ATTACK ZONES (2021)



- Initial Attack Zones
- Dispatch Zones
- County Boundaries
- Bureau of Land Management
- Bureau of Reclamation
- Department of Agriculture
- Department of Defense
- Department of Energy
- National Park Service
- Private Land
- State Game & Fish
- State Land
- State Parks
- Tribal
- US Fish & Wildlife Service
- US Forest Service
- Airports
- NM State Forestry Offices
- NM State Parks
- Mile Markers
- Townships



## Initial Attack Zones

- BAP - Bandelier Natl. Monument
- BDR - Bosque del Apache NWR
- BTR - Bitter Roots NWR
- CAD - BLM Carlsbad Field Office
- CAF - Carson NF
- CCP - Carlsbad Caverns Natl. Park
- CHP - Chiricahua Natl. Monument
- CIF - Cibola NF
- COF - Coronado NF
- DOD - Department of Defense
- FAD - BLM Farmington Field Office
- GNF - Gila NF
- JIA - BIA Jicarilla Agency
- LAA - BIA Laguna Agency
- LAED - Los Alamos Fire Department
- LCD - BLM Las Cruces Field Office
- LNF - D1 - Lincoln NF - Smokey Bear Ranger District
- LNF - D2 - Lincoln NF - Cloudcroft Ranger District
- LNF - D3 - Lincoln NF - Guadalupe Ranger District
- MEA - BIA Mescalero Agency
- N1S - NM State Chama District
- N2S - NM State Cimarron District
- N3S - NM State Socorro District
- N4S - NM State Las Vegas District
- N5S - NM State Capitan District
- N6S - NM State Bernalillo District
- NAO - BIA Navajo Agency
- NPA - BIA Northern Pueblos Agency
- RNA - BIA Ramah Navajo Agency
- ROD - BLM Roswell Field Office
- RPD - BLM Puerco District
- SCD - BLM Socorro Field Office
- SER - Sevilleta NWR
- SNF - Santa Fe NF
- SPA - BIA Southern Pueblos
- TAD - BLM Taos Field Office
- USAF - US Air Force
- WHP - White Sands Natl. Monument
- ZUA - BIA Zuni Agency