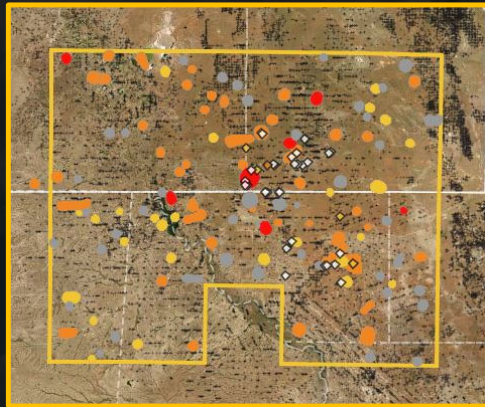
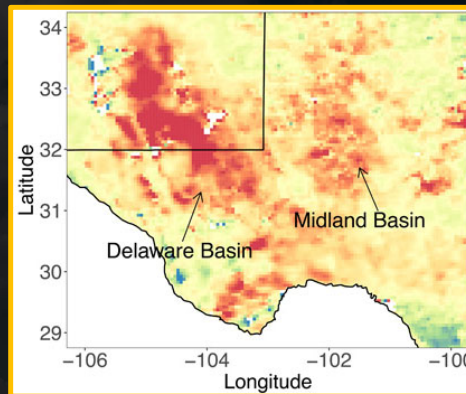


Methane Emissions in the Permian basin



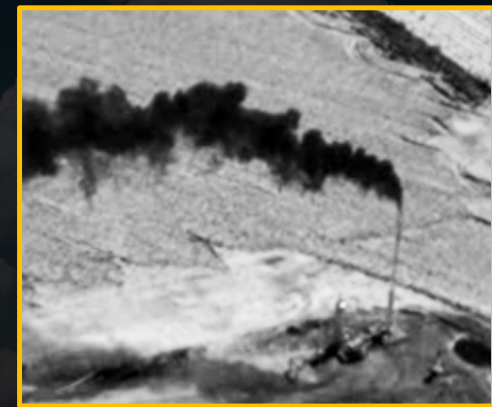
PermianMAP estimates leak rate is 3.5%.

- Triple EPA's national rate
- 1.4 million tonnes of wasted gas
- Wasted gas could serve every home in NM for the next two years.



TROPOMI satellite study finds highest methane levels ever measured in U.S. oilfield.

- Leak rate is twice as high as other basins



Flaring surveys reveal 11% of flares are malfunctioning, unlit.

- Flaring is one of the leading causes of Permian methane emissions

Without strong state rules, only backstop to emissions has been federal safeguards, which the Trump admin is unraveling.