

2013 ANNUAL REPORT
OF THE
MINING ACT RECLAMATION PROGRAM
TO THE
NEW MEXICO MINING COMMISSION



Mining and Minerals Division
Mining Act Reclamation Program
Division Director: Fernando Martinez
Program Manager: Holland Shepherd

Cover Photo Information

The cover photo was taken at the Questa Mine mill tailings site in Taos County. The photograph depicts the reclaimed tailing impoundment and redevelopment of the site as a utility-scale concentrated photovoltaic system (CPV), which began in 2011. The site is being monitored by MMD and other cooperating agencies.

The CPV system at the 21-acre solar facility uses lenses to concentrate sunlight onto solar panels and transform the sunlight into electricity. There are 173 CPV tracking systems at the site that are able to reposition the panels where sunlight can focus directly on the panels' lenses. The installation was a joint effort between EPA Superfund, Chevron Mining Inc., and Mining and Minerals Division.

Table of Contents

List of Tables.....	ii
List of Figures.....	ii
1. Executive Summary	1
2. General Description of Mining Operations	2
3. General Description of Reclamation Practices.....	8
4. Financial Assurance Update	10
5. Amendments to the New Mexico Mining Act Rules.....	11
6. Mineral Production Statistics for New Mexico in 2013.....	12

List of Tables

Table 1.	Mining Operations Approved since 1994
Table 2.	Approved Permit Applications–2013
Table 3.	Approved Exploration Permits–2013
Table 4.	Pending Regular Mine Applications–2013
Table 5.	Summary of Disturbed and Reclaimed Acres–2013
Table 6.	Summary of Financial Assurance Held by MMD–2013
Table 7.	Mineral Production Value, Rank, Employment, Payroll and Revenue–2013

Appendix A:

Table A-1.	Number of Acres Disturbed and Reclaimed as of December 2013
------------	---

Appendix B:

Table B-1.	New Mexico Financial Assurance as of December 2013
------------	--

List of Figures

Figure 1.	Percentage of Production Value, Employment, Payroll and Revenue by Commodity–2013
Figure 2.	Mineral Industry Employment, 1990-2013

1. Executive Summary

This annual report summarizes activities regulated by, and related to, the Mining Act Reclamation Program (“MARP”) of the New Mexico Mining and Minerals Division (“MMD”). Part 13 of the New Mexico Mining Act Rules (the “Rules”) requires an annual report be provided to the New Mexico Mining Commission. The annual report is to contain a general description of mining operations, reclamation practices, proposed rule changes and production figures for the state.

This report identifies activities related to the permitting and regulation of mines and mineral exploration under the Mining Act for the 2013 calendar year. In this report, we also provide production and reclamation statistics for the 2013 calendar year, as required in the Rules. This information is provided to us by our mine operators in annual reports that are required to be submitted by April of the following year. The 2013 information submitted in this report was provided by our operators in April 2014.

This report also provides tables identifying all mining and exploration operations that have obtained a permit, or submitted a permit application, under MARP since its inception in 1994.

This report includes:

- Production figures for New Mexico mines active during the 2013 calendar year;
- A description of reclamation activities and practices related to specific mines in the State of New Mexico;
- A description and summary of exploration and mine permitting activities for the 2013 calendar year;
- Summary of reclaimed and disturbed acreage for 2013;
- Summaries of the two petitions submitted in 2013 proposing changes to the Rules; and
- Summary of financial assurance amounts and instruments for each approved mine site.

2. General Description of Mining Operations

Permit Types

Mining operations in New Mexico are designed by the following terminology:

- Minimal Impact Mining Operations are small extractive operations that are less than 10 acres in size (except for humate operations which can be up to 20 acres in size) and can be designated as either existing or new operations. Existing operations are those that operated between January 1, 1970, and June 18, 1993, while new operations are those permitted after 1993.
- Regular Mining Operations are larger mining operations of unlimited acreage, and can be designated as either existing or new operations. Existing regular mining operations are those that operated between January 1, 1970, and June 18, 1993, while new operations are those permitted after 1993.
- Minimal Impact Exploration Operations are those that create less than 5 acres of surface disturbance and meet the definition of “minimal impact mining operations” as defined by the Rules. These are typically small extractive operations that involve the sampling of ore bodies prior to full-scale mine development.
- Regular Exploration Operations are those that exceed 5 acres of surface disturbance or do not meet the definition of “minimal impact mining operations” as defined by the Rules.
- General Permit Operations cannot excavate materials greater than 200 cubic yards per year, or disturb greater than 2 acres of surface at any one time. The General Permit category is typically used by hobby and recreational miners.

The Minimal Impact Exploration and General Permit categories make up the largest number of permitted operations. Table 1 shows the various types of mining and exploration operations, by category, that have received approved permits since the start of MARP in 1994.

Table 1. Mining Operations Approved from 1994 to 2013

Type of Operation	Description	Number of Operations
Regular Existing Mining	>10 acres of disturbance	31
Regular New Mining	>10 acres of disturbance	0
Minimal Impact Existing Mining	<10 acres of disturbance	24
Minimal Impact New Mining	<10 acres of disturbance	33
Regular Exploration	>5 acres of disturbance	6
Minimal Impact Exploration	<5 acres of disturbance	151
General (Recreational)	<200 cubic yards/yr of disturbance	292
Total Mining Operations Permitted		537

Permit Modifications and Revisions

MARP typically receives and processes a large number of permit modifications and revisions, which can be just as time-consuming in processing and approving as new permit applications. Modifications and revisions can involve updating reclamation acreage, permit transfers, name changes as well as adjustments to financial assurance instruments and amounts. The Tyrone Mine and the Chino Mine are both in the process of updating their closeout plans. These updates are major revisions to the mine permits involving updating financial assurance, changes to the reclamation plans, and extended negotiations with the operator, other agencies, and the public.

Chevron Mining Inc.'s Questa Mine revision has also involved MARP over the last several years. Because of the need to coordinate state reclamation plans at the Questa mine with the federal U.S. Environmental Protection Agency's ("EPA") prescription for remediation under the Comprehensive Environmental Response, Compensation, and Liability Act ("CERCLA") process, MMD has intentionally delayed the operator's requirement to submit a new updated closeout plan for the complete mining and milling facility until after a Consent Decree has been satisfactorily negotiated to implement remediation requirements under the December 2010 Record of Decision ("ROD").

The Mt. Taylor Mine, operated by Rio Grande Resources, submitted two revision requests in 2013: one to update the closure/closeout plan (Revision 13-1) and one to revise the permit to return to active mining status (Revision 13-2). Both revisions involve numerous meetings with the operator and are generally complicated in nature. Both revisions continue to be processed by MARP.

Table 2 identifies specific types of permit applications, including modifications and revisions, approved by MMD during the 2013 calendar year.

Table 2. Approved Permit Applications – 2013

Type of Operation	Description	Number of Approved Operations
		2013
Regular New Mining	> 10 acres of disturbance	0
Minimal Impact New Mining	< 10 acres of disturbance	3
Regular Exploration	> 5 acres of disturbance	0
Minimal Impact Exploration	< 5 acres of disturbance	2
General Permits	< 200 cubic yards/yr of disturbance	31
Revisions	Revision to an Existing Permit	1
Modifications	Modification to an Existing Permit	12

Exploration Projects and General Permits

The number of exploration applications and general permit applications MARP received decreased in 2013 compared to 2012. Two exploration permits were approved in 2013, as shown in Table 3 below.

Table 3: Approved Exploration Permits – 2013

Permit Number	Permit Name	Permit Operator	Commodity
HI017EM	Lordsburg Project	Lordsburg Mining Company	Copper, Gold
OT040EM	Cornudas Wind Mountain	Geovic Mining Corporation	Rare Earths

Approved Minimal Impact Mining Projects in 2013

Three new minimal impact mines were approved in 2013:

- Double Tree I Mine (Permit No. MK038MN)

The Double Tree I Mine is a minimal impact humate extraction operation by Miocene, LLC in McKinley County. The mine is located on private surface and mineral rights.

- Brie I Mine (Permit No. MK039MN)

The Brie I Mine is a minimal impact humate extraction operation located in McKinley

County. The permittee is Miocene, LLC. The mine is located on private surface and mineral rights.

- Morningstar Humate Plant (Permit No. SJ001MN)

The Morningstar Plant site is a minimal impact humate milling/processing operation by Morningstar Minerals Company in San Juan County. The humate processing operation is located on a private surface estate.

Pending Regular Mine Applications

Five new conventional mines are engaged in some phase of permit development in New Mexico, a summary of which is provided in Table 4:

Table 4: Pending Regular Mine Permit Development – 2013

Project Name	Operator	Surface Ownership	Commodity	Proposed Permit Area (acres)
Copper Flat Mine	New Mexico Copper Corporation	BLM and Private Owners	Copper	2,190
La Jara Mesa Mine	Laramide Resources	USFS	Uranium	22
Roca Honda Mine	Uranium Resources, Inc.	USFS and SLO	Uranium	183
Cebolleta Mine	Neutron Energy	Private Land Grant	Uranium	4,475
Ortiz Mine	Santa Fe Gold Corporation	Private Land Grant	Gold	4,702

- Roca Honda Mine

The proposed Roca Honda Mine by Roca Honda Resources is located in McKinley County on Cibola National Forest and state trust lands. Roca Honda Resources has submitted both the Sampling and Analysis Plan and the Permit Application Package to MMD.

The Roca Honda Mine application indicates that the mine plan is for construction of an underground mine of one or two shafts with surface facilities comprising approximately 183 acres within a proposed 1,920 acre permit area. Roca Honda Resources also submitted a Mining Plan of Operations to the U.S. Forest Service (“USFS”) which is being handled through the National Environmental Policy Act (“NEPA”) Environmental Impact Statement (“EIS”) process. MMD continued to collaborate with the operator and USFS on this mine throughout 2013.

- La Jara Mesa Mine

The proposed La Jara Mesa Mine by Laramide Resources, Inc. is located in Cibola County on Cibola National Forest land on the edge of the Mt. Taylor Traditional Cultural Property. The La Jara Mesa Mine application details an underground mine accessed from an incline portal with approximately 16 acres of surface disturbance within the proposed 77 acre permit area.

Laramide Resources submitted a permit application to the USFS for the proposed mine which is being handled through the EIS process. Laramide Resources also initiated the permitting process with MMD by submitting a Sampling and Analysis Plan. The Permit Application Package is anticipated to be submitted to MARP after the completion of the EIS process and after the ROD has been issued by the USFS. The operator has slowed work on this permit application and therefore little work was performed by MMD during 2013 on this mine.

- Copper Flat Mine

New Mexico Copper Corporation submitted a Sampling and Analysis Plan in 2010 for the Copper Flat Mine, a proposed new regular copper mine in Sierra County, and conducted baseline data collection and analysis during 2011. The Permit Application Package was submitted in July 2012. The operator already submitted a Plan of Operation to the BLM. MMD and BLM are working together to address the federal NEPA and state Environmental Evaluation (“EE”) processes. Ongoing work by MMD throughout 2013 included approximately monthly meetings with the operator and cooperating agencies as well as continued review of reclamation plans, operation plans, geochemical reports and hydrological reports.

- Cebolleta Mine

Neutron Energy submitted a Sampling and Analysis Plan in March 2012 for the Cebolleta Mine, a proposed new uranium mine in Cibola County. The proposed mine is located entirely on private land, most of which is owned by the Cebolleta Land Grant. The proposed mine permit boundary is approximately 4,475 acres, though the amount of disturbance is anticipated to be less. Neutron Energy was purchased by Uranium Resources, Inc. in 2012. Due to other priorities, the operator has slowed work on this permit application and therefore little work was performed by MMD during 2013 on this mine.

- Ortiz Mine

Santa Fe Gold Corporation submitted a Sampling and Analysis Plan in July 2013 for the Ortiz Mine, a proposed new gold mine in Santa Fe County. The proposed mine is located entirely on private land that is also a Spanish Mine Grant. The proposed mine permit boundary is approximately 4,702 acres and may include two separate

open pits (one in Carache Canyon and one in Lukas Canyon) as well as a milling facility and tailings deposition facility. MMD and the cooperating agencies reviewed the Sampling and Analysis Plan in 2013 and provided comments to the operator so that implementation of the Baseline Data Collection phase could commence.

3. General Description of Reclamation Practices

Revegetation Test Plots and Geomorphic Reclamation Practices

MARP encourages innovative and experimental reclamation, particularly at sites where steep slopes and/or acid-producing geologic materials present reclamation challenges. Four large operations permitted under MARP are evaluating vegetation test plots constructed over the last several years including: seeding rates, fertilizer rates, soil amendments, and water infiltration rates using various soil covers and cover depths. Initial results of the test plot studies at the Tyrone and Chino mines suggest that use of the Gila Conglomerate as a growth medium is suitable for reclamation. Other trends continue to develop which will assist in decision-making in the future. Chevron Mining Inc.'s Questa Mine, Freeport-McMoRan's Tyrone and Chino mines, and GCC Rio Grande's Tijeras Mine all have ongoing test plot programs.

MARP also encourages geomorphic reclamation approaches at hard rock mines. Geomorphic reclamation involves the use of reconstruction techniques, particularly on out-slopes which mimic natural drainage patterns to create a more stable and natural looking post-mine topography. Utilizing this new approach, the coal mines in New Mexico have enjoyed significant successes in erosion reduction, maintenance cost reductions, and greater vegetation success. Hard rock mine operators are beginning to learn how geomorphic reclamation might improve their reclamation strategies for long-term success. The Tyrone, Tijeras and Questa mines are all exploring ways to incorporate geomorphic design into their reclamation plans.

Completed Reclamation

Ten mines have received a complete release for reclamation or for achieving the post-mine land use under the New Mexico Mining Act:

- Boston Hill Mine, Grant County
- Mesa Verde Resources Mill, Sandoval County
- Malone Mine, Grant County
- Toro Mine, Grant County
- CR Minerals Mill, Santa Fe County
- Velarde Mill, Rio Arriba County
- Alley Gypsum Mine, Doña Ana County
- Chino Limestone Mine, Grant County
- Shamrock Leach Site, Doña Ana County
- Chaco Limestone Quarry, San Juan County

Total Disturbance and Reclamation

Total disturbance and reclamation across the state is reported by the mine operators. Overall disturbed and reclaimed acreage under permit with MARP for the 2013 calendar year is summarized in Table 5.

Table 5: Summary of Disturbed and Reclaimed Acres – 2013

Calendar Year	Disturbed Acres To Date	Reclaimed Acres To Date
2013	26,044.7	6,659.6

Appendix A contains summary tables of operator reports on disturbed and reclaimed acres for the 2013 calendar year.

4. Financial Assurance Update

Appendix B summarizes the types and amounts of financial assurance provided to the State of New Mexico by mining operators who have obtained approved permits and closeout plans. The forms of financial assurance include surety bonds, cash deposits, letters of credit, collateral (real estate), and third-party guarantees.

A summary of the amounts of financial assurance held by MMD for the 2013 calendar year is in Table 6 below. Appendix B lists financial assurance amounts for individual permits.

Table 6: Summary of Financial Assurance Held by MMD – 2013

Calendar Year	Financial Assurance Amount Held By MMD
2013	\$693,615,072.92

The total amount of financial assurance increased in 2013 by approximately \$9.3 million compared to 2012. In 2013, General Electric/United Nuclear Corporation provided approximately \$25.8 million in interim financial assurance for the St. Anthony Mine while the closure/closeout plan continues to be developed.

5. Amendments to the New Mexico Mining Act Rules

Two petitions were submitted to the New Mexico Mining Commission (“NMMC”) for consideration. The two petitions and the resulting outcome are summarized below.

Petition 13-01 was submitted by Mineris Vitae, LLC, the operator and permittee for the Section 2 Mine in McKinley County. Petition 13-01 proposed an increase in the amount of surface disturbance allowed for a humate extraction operation under a minimal impact mining permit. Specifically, an increase from 10 acres to 60 acres was proposed, provided that expeditious reclamation is conducted. The NMMC conducted a hearing on August 26-27 and September 17, 2013. The NMMC issued a final order on February 12, 2014, granting an increase from 10 acres to 20 acres for the amount of surface disturbance a humate mine can create under a minimal impact mining permit.

Petition 13-02 was submitted by MMD and proposed to delete the sunset provision in §19.10.2.202.E of the New Mexico Administrative Code. The NMMC held a public hearing on October 2, 2013, and issued a final order on November 15, 2013, granting the deletion of §19.10.2.202.E from the Administrative Code.

No other rule changes were proposed in 2013.

6. Mineral Production Statistics for New Mexico in 2013

For the second year in a row, operators reported an all-time high mineral production value – more than \$2.82 billion worth of minerals were extracted from New Mexico mines in 2013, almost one percent over 2012's total (Table 7 and Figure 1). Reported potash production increased more than 40 percent from 2012 (although at a lower price per pound in 2013), and copper production and value were up 18 percent and nine percent, respectively, from 2012.

New Mexico remains a leading United States mineral producer with 2013 rankings of first in potash, perlite and zeolite; third in copper, as reported by the U.S. Geological Survey (USGS); and twelfth in coal (latest available information), as reported by the U.S. Energy Information Administration. The principal minerals, in descending order of 2012 production value, were potash, copper and coal. According to USGS, for 2013, New Mexico ranked thirteenth when ranking states by the production value of non-energy minerals, producing 2.07 percent of the total U.S. production value of non-energy minerals (up from fourteenth and 1.95 percent in 2012, respectively).

Potash again claimed the top spot for production value, copper reported the largest payroll, while coal generated the greatest revenue for the state in 2013 (Table 7 and Figure 1). Total 2013 revenues (state and federal) generated by mineral production in New Mexico slightly declined (five percent) from 2012 levels to \$59.1 million. State revenues include state trust land mineral lease royalties, rentals and bonuses and associated taxes; whereas federal revenue includes a 50 percent state share of federal royalties. In any production year, these revenues only accrue if the lessee is actually mining and producing commodities on federal or state land.

Industry payroll (excluding benefits) fell off seven percent from last year's all-time high of \$372 million to \$345 million (Figure 2). Copper was the largest employer in New Mexico's mining industry, followed by coal and potash operations. Total mining sector direct and contract employment increased slightly from 2012 to 2013. Direct and contract employees in the mining industry numbered 7,112 in 2013, an almost four percent increase from 2012: direct employment increased almost three percent to 5,806 employees; contract employment increased almost nine percent to 1,306 workers; reclamation employment decreased significantly in 2013 (nearly 37 percent) to 416 workers (Figure 2).

Registered active mining operations in New Mexico in 2013 numbered 217: four coal mines; eight potash operations (includes mines, refineries and compaction plants); nine metal mine, mill and SX/EW operations (includes copper, molybdenum, gold, and silver); 15 industrial mineral mines; 22 industrial mineral mills; and 159 stone and aggregate operations.

Table 7: Mineral Production Value, Rank, Employment, Payroll and Revenue – 2013

Mineral	Production ¹	Production Rank ²	Production Value \$	Employment ³	Reclamation Employment	Payroll \$ ⁴	Revenue Generated \$ ⁵	
							State	Federal
Coal	21,968,639	12	\$ 816,628,814	1,623	183	\$ 85,145,465	\$ 22,700,382	\$ 8,068,407
Copper	266,483,184	3	\$ 890,357,625	1,885	88	\$ 106,936,573	\$ 7,259,514	\$ -
Gold	2,943	-	\$ 3,994,109	59	-	\$ 2,392,294	\$ 58,068	\$ -
Industrial Minerals ⁶	1,248,312	-	\$ 91,113,849	471	11	\$ 17,860,998	\$ 1,028,914	\$ 212,690
Aggregates ⁷	9,393,307	-	\$ 81,505,531	937	101	\$ 14,264,197	\$ 2,498,063	\$ -
Other Metals	512,323	-	\$ 2,539,625	65	-	\$ 1,877,897	\$ 651,719	\$ -
Molybdenum	2,384,509	-	\$ 24,739,281	461	-	\$ 19,028,960	\$ -	\$ -
Potash ⁸	2,188,874	1	\$ 914,659,051	1,600	15	\$ 95,988,330	\$ 5,254,275	\$ 11,369,170
Silver ⁹	68,523	-	\$ 1,867,207	-	-	\$ -	\$ 33,886	\$ -
Uranium ¹⁰	-	-	\$ -	11	18	\$ 1,164,144	\$ -	\$ -
TOTAL			\$2,827,405,091	7,112	416	\$ 344,658,858	\$ 39,484,821	\$19,650,267

Source: Mining and Minerals Division, unless otherwise noted.

¹ Production is in short tons for coal, industrial minerals, aggregates, other metals and potash; in pounds for copper and molybdenum; and in troy ounces for gold and silver.

² Production rank is based on 2013 production value in relation to other U.S. states. Molybdenum ranking unavailable.

Sources: *Metals, potash, industrial minerals and aggregates: Mineral Resources Program, United States Geological Survey (minerals.er.usgs.gov)*

Coal: Energy Information Administration, United States Department of Energy (www.eia.gov/coal)

³ Employment category includes direct and contract employees.

⁴ Payroll does not include benefits.

⁵ State revenue includes state trust land mineral lease royalties, rentals and bonuses; and severance, resource excise and conservation tax revenues.

Federal revenue includes 50% state share of federal royalties.

Sources: *State data: New Mexico Taxation and Revenue Department (www.state.nm.us/tax), New Mexico State Land Office (www.nmstatelands.org)*

Federal data: Office of Natural Resources Revenue (www.onnr.gov)

⁶ Category includes brick clay, calcite, dimension stone, gypsum, humate, perlite, Portland cement, pumice, salt, silica, and zeolite.

⁷ Category includes base course, caliche, clay and shale, crushed rock, flagstone, fill dirt, gravel, limestone, red dog, rip-rap, sand, scoria and topsoil.

⁸ Potash production is K₂O mill production.

⁹ Employment and payroll for silver included in copper and gold.

¹⁰ Employment/payroll numbers are for licensing/permitting at proposed uranium mines, and reclamation activities/maintenance at closed mines and mills.

Figure 1. Percentage of Production Value, Employment, Payroll and Revenue by Commodity - 2013

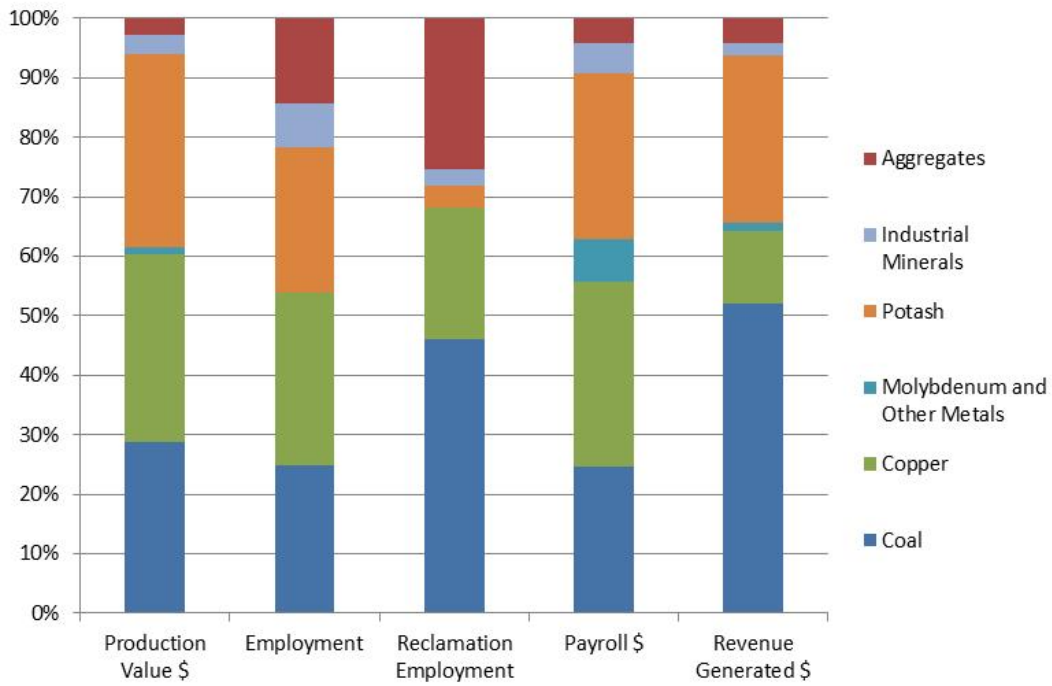
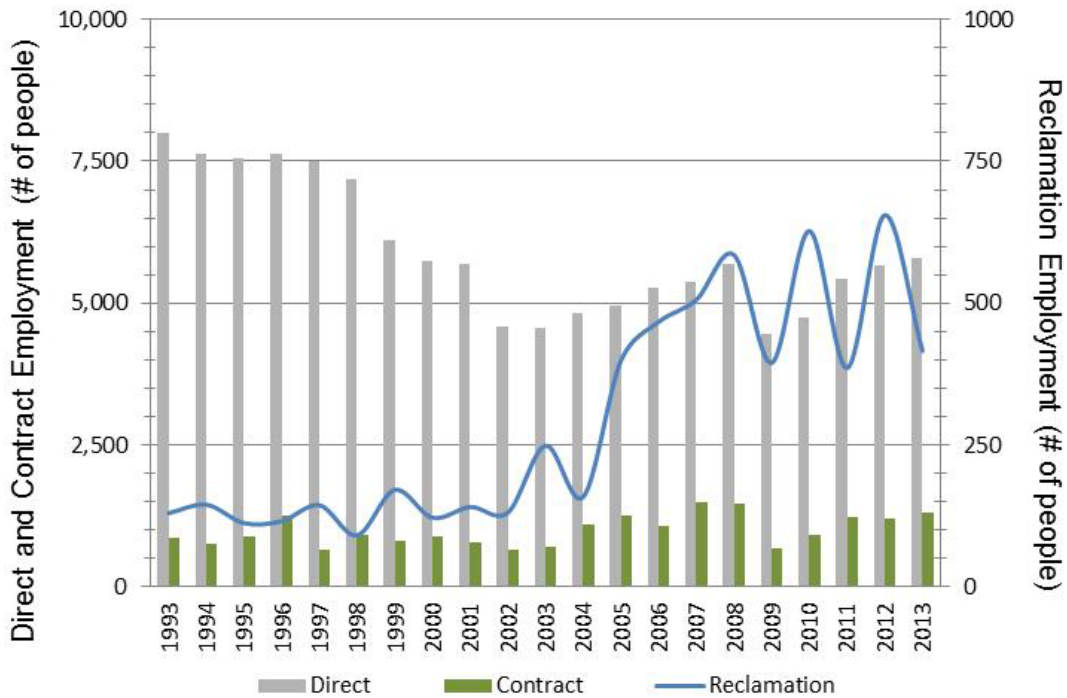


Figure 2. New Mexico Mineral Industry Employment from 1990-2013



Appendix A:

Summary of Operator Reports
for
Disturbed and Reclaimed Acreage
2013

Table A-1. Number of Acres Disturbed and Reclaimed as of December 2013

Permit No.	Permit Name	Total Acres Disturbed To Date	Total Acres Reclaimed To Date
BE001RE	Tijeras Mine and Mill	589.4	103.5
CA002MN	Deadwood / Last Chance Mine	1.0	0.0
CA003ME	Hiawatha And Little Jim Mine	2.0	0.0
CA005RE	Challenge Mine and Mill	0.0	0.0
CA010MN	Apache Camp No. 1 Mine	0.0	0.0
CI002RE	Mt. Taylor Mine	147.7	0.0
CI003MN	ANP No. 2 Mine	2.0	0.0
CI004MN	Haskani Mine	13.3	0.5
CI005RE	Tinaja Pit Mine	40.0	0.0
CI006MN	Ray Claims No. 4 and No. 6 Mine	0.2	0.5
CI007RE	JJ No. 1 Mine	0.0	20.0
DA001MN	Shamrock Leach Site	2.0	2.0
DA003MN	Alley Gypsum Mine	1.2	1.5
GR001RE	Pinos Altos Mine	9.0	9.0
GR002RE	Continental Mine and Mill	928.0	19.0
GR006RE	Chino Limestone Mine	55.0	55.0
GR007RE	Little Rock Mine	220.0	32.0
GR008RE	Jersey Lily, Snowflake and Virtue Mines	0.0	22.0
GR009RE	Chino Mine and Mill	10741.7	640.0
GR010RE	Tyrone Mine and Mill	8546.1	4611.0
GR011ME	Summit Mine	2.0	0.0
GR012MN	KB Mine	41.0	42.0
GR016ME	Malone Mine	0.0	0.0
GR018ME	Banks Mine (Lost New Summit No. 1 Mine)	0.0	0.0
GR019ME	Boston Hill Mine	0.0	0.0
GR020RE	Georgetown Mine	0.0	0.8
GR024MN	Toro Mine	0.0	0.0
GR025ME	Mathis Limestone Quarry Mine	0.0	0.0
GR028RE	Center Mine	0.0	1.0
GR029ME	Mount Royal Mine and Mill	1.0	0.0
GR030ME	Chemical Lime Mine & Mill	0.0	4.4
GR036MN	Grooms Placer Mine	0.0	0.0
GR056MN	McCauley Perlite Mine	0.0	0.0
GR058MN	Billali Mine	1.2	0.0
HI001RE	Lordsburg Mine and Mill	15.0	5.0
HI002RE	Brockman Mine	40.0	40.0

HI004MN	KM Mine	9.0	8.0
HI008ME	Volcano Mine	8.0	0.0
LI001ME	Warner Gulch Placer Mine	2.0	2.0
LI002ME	Smokey Mine	0.0	0.0
LI005ME	Capitan Iron Mine	12.0	0.0
LU001RE	Deming Jigging Mill	16.0	16.0
LU008RE	Cyprus Deming Tailings Impoundment	20.0	23.9
LU009RE	Asarco Deming Mill	56.5	44.0
LU011MN	Herb Bailey No. 1 Mine	0.0	0.0
LU012MN	Herb Bailey No. 2 Mine	0.0	0.0
MK002RE	Section 35 Mine	40.0	30.0
MK003ME	Star Lake Mine - Menefee	4.0	2.0
MK004RE	Northeast Church Rock Mine	0.0	17.0
MK005RE	Section 27 Mine	17.0	15.0
MK006RE	St. Anthony Mine	435.0	0.0
MK007ME	Star Lake Mine - Mesa Verde	54.1	48.0
MK008ME	Pueblo Alto Mine	39.2	41.8
MK009RE	Old Stope Leach Mine	81.0	78.0
MK010MN	U-Mate Mine	1.0	0.0
MK011MN	Morningstar Mine	14.0	19.0
MK012MN	Jaramillo Humate Mine	2.0	0.0
MK026MN	Black Spring Mine	10.5	6.0
MK037MN	Section 2 Mine	25.5	18.4
MK038MN	Double Tree I	0.0	0.0
MK039MN	Brie I Mine	10.0	4.0
OT001RN	Wind Mountain Quarry Mine	0.0	0.0
OT002MN	B.O.W. Mine	0.6	0.0
OT005MN	Orogrande Placer Gold Mine	1.8	0.0
RA001ME	Northstar Mine	1.3	0.0
RA003ME	Cullum Claims Mine	60.0	0.0
RA004RE	Rocky Mountain Mine	180.0	36.0
RA005RE	Velarde Mill	28.0	27.4
RA006ME	General Pumice Mine	17.0	45.0
SA001RE	El Cajete Mine	68.0	39.5
SA002RE	Clod Buster Mine and Mill	0.0	0.0
SA004MN	Copar South Pit Mine	9.0	18.5
SA005ME	Menefee Mill	9.7	0.0
SA006MN	Copper City Mine	1.0	0.0
SA009MN	Eagle Mesa Mine	8.1	20.5
SA010ME	Mesa Verde Resources Mill	0.0	0.0
SA011MN	San Luis Mine	15.0	10.0

SA012MN	Horizon-Ag Products Cuba Facility	0.0	0.0
SA015MN	H2 Screen Facility	3.5	0.0
SF001ME	San Pedro Mine and Mill	12.0	12.0
SF002RE	Cunningham Hill Mine	307.0	289.0
SF003ME	Silver Silica Mine	4.0	0.5
SF006ME	CR Minerals Mill	8.0	8.0
SI001ME	St. Cloud U.S. Treasury Mine	10.0	3.0
SI005MN	Burbank Canyon Mine	0.0	0.0
SI006RE	Zeolite Mine and Mill	51.0	24.5
SI007ME	Midnight Mine	4.0	0.0
SI020MN	Coyote Cliff No. 1 Mine	1.4	0.0
SI025MN	Harding Mine	0.0	0.0
SJ001MN	Morningstar Humate Plant	7.7	0.0
SJ002MN	Chaco Limestone Quarry	2.0	3.5
SO001RE	Socorro Mine and Mill	160.0	43.4
SO002MN	Sais Quarry Mine	3.7	0.0
SO005MN	San Lorenzo Claim Mine	0.0	0.0
TA001RE	Questa Mine and Mill	2300.0	21.0
TA002RE	El Grande Mine and Mill	170.0	14.0
TA003RE	U. S. Hill Mine	60.0	61.5
TA005RE	No Agua Mine and Mill	276.0	0.0
VA001ME	Lucero Quarry Mine	9.3	0.0
TOTAL:		26,044.7	6,659.6

Appendix B:

Table of Financial Assurance Amounts

Table B-1. Financial Assurance as of December 2013

Permit No.	Permit Name	Type	Amount of Financial Assurance Held (\$)
BE001RE	Tijeras Mine and Mill	Trust	867,500.00
		Surety Bond	70,000.00
		Third Party Guarantee	2,812,500.00
CA003ME	Hiawatha And Little Jim Mine	Certificate of Deposit	736.00
CI002RE	Mt. Taylor Mine	Surety Bond	725,056.00
CI004MN	Haskani Mine	Certificate of Deposit	32,743.00
CI005RE	Tinjaja Pit Mine	Letter of Credit	161,514.00
CI006MN	Ray Claims No. 4 and No. 6 Mine	Certificate of Deposit	20,405.00
CI007RE	JJ No. 1 Mine	Surety Bond	642,298.90
CI014ER	Cebolleta Exploration Project	Letter of Credit	46,980.00
		Letter of Credit	41,625.00
GR001RE	Pinos Altos Mine	Letter of Credit	343,600.00
GR002RE	Continental Mine and Mill	Third Party Guarantee	18,181,672.00
		Collateral Bond	6,173,600.00
		Trust	3,000,000.00
GR007RE	Little Rock Mine	Surety Bond	1,424,470.00
		Surety Bond	1,520,113.00
GR008RE	Jersey Lily, Snowflake and Virtue Mines	Letter of Credit	46,600.00
GR009RE	Chino Mine and Mill	Third Party Guarantee	111,230,029.00
		Trust	64,042,304.00
GR010RE	Tyrone Mine and Mill	Letter of Credit	170,874.00
		Surety Bond	6,780,518.00
		Third Party Guarantee	91,529,850.00
		Collateral Bond	27,951,986.00
		Trust	27,018,850.00
		Surety Bond	25,000,000.00
GR012MN	KB Mine	Certificate of Deposit	24,182.00
GR020RE	Georgetown Mine	Certificate of Deposit	5,200.00
GR022MN	Farmers Backbreaker Mine	Certificate of Deposit	15,000.00
GR025ME	Mathis Limestone Quarry Mine	Certificate of Deposit	3,000.00
GR028RE	Center Mine	Surety Bond	88,563.00
		Certificate of Deposit	12,000.00
GR030ME	Chemical Lime Mine & Mill	Surety Bond	62,287.00
GR037EM	Codebreaker Enterprises, Inc. Santo Nino Claim	Certificate of Deposit	17,940.00

GR039ER	Lone Mountain Project	Certificate of Deposit	57,210.00
		Certificate of Deposit	76,440.00
		Certificate of Deposit	68,250.00
		Certificate of Deposit	44,480.00
GR040EM	ORO II	Letter of Credit	39,181.00
GR041EM	Oak Grove Exploration Project	Certificate of Deposit	83,138.00
GR043EM	Lone Hills Exploration Project	Certificate of Deposit	61,410.00
GR062EM	SP Exploration Project	Letter of Credit	27,036.60
GR063EM	Saddleback Project	Letter of Credit	78,962.00
HI001RE	Lordsburg Mine and Mill	Certificate of Deposit	206,471.00
		Certificate of Deposit	20,355.00
		Certificate of Deposit	3,879.00
HI002RE	Brockman Mine	Letter of Credit	276,900.00
HI004MN	KM Mine	Certificate of Deposit	8,124.00
HI008ME	Volcano Mine	Collateral Bond	28,652.00
HI013ER	Lordsburg Exploration Project II	Certificate of Deposit	126,100.00
HI015EM	McGhee Peak Exploration Project	Certificate of Deposit	65,860.00
HI016EM	Railroad Well Exploration Project	Certificate of Deposit	68,604.00
HI017EM	Lordsburg Project	Surety Bond	50,852.70
LI001ME	Warner Gulch Placer Mine	Letter of Credit	10,000.00
LI003ER	Bonito Gold & Silver Project	Cash	200.00
LI005ME	Capitan Iron Mine	Certificate of Deposit	15,000.00
LI010EM	Outlaw Exploration Project	Certificate of Deposit	33,525.00
LI011EM	Outlaw # 2	Certificate of Deposit	25,200.00
LI012EM	Outlaw #3	Letter of Credit	32,600.00
LI013EM	M&E Exploration Project	Certificate of Deposit	20,000.00
		Certificate of Deposit	6,000.00
LI014EM	Vista Project	Certificate of Deposit	15,650.00
LI030EM	KD Placer Claims	Certificate of Deposit	9,690.00
LU001RE	Deming Jigging Mill	Surety Bond	100,000.00
LU008RE	Cyprus Deming Tailings Impoundment	Letter of Credit	132,588.00
LU017EM	Victorio Project	Certificate of Deposit	80,299.00
MK003ME	Star Lake Mine - Menefee	Surety Bond	13,000.00
MK005RE	Section 27 Mine	Surety Bond	377,000.00
MK006RE	St. Anthony Mine	Third Party Guarantee	19,400,400.00
		Letter of Credit	6,466,800.00

MK007ME	Star Lake Mine - Mesa Verde	Certificate of Deposit	1,577.00
		Certificate of Deposit	21,193.00
		Certificate of Deposit	24,794.00
		Certificate of Deposit	4,408.00
		Certificate of Deposit	5,000.00
MK008ME	Pueblo Alto Mine	Certificate of Deposit	22,000.00
		Certificate of Deposit	2,800.00
		Certificate of Deposit	2,677.00
		Certificate of Deposit	21,051.00
		Certificate of Deposit	2,500.00
		Certificate of Deposit	27,825.00
MK009RE	Old Stope Leach Mine	Letter of Credit	578,000.00
MK010MN	U-Mate Mine	Certificate of Deposit	8,844.00
MK011MN	Morningstar Mine	Certificate of Deposit	2,880.00
MK023ER	Marquez Canyon Confirmation Drilling Program	Letter of Credit	115,030.00
MK026MN	Black Spring Mine	Certificate of Deposit	25,000.00
		Certificate of Deposit	11,000.00
MK028EM	Elizabeth Claims	Letter of Credit	70,270.00
MK037MN	Section 2 Mine	Certificate of Deposit	25,000.00
		Certificate of Deposit	5,000.00
		Certificate of Deposit	21,980.00
MK038MN	Double Tree I	Letter of Credit	45,600.00
		Letter of Credit	87,803.64
MK039MN	Brie I Mine	Letter of Credit	45,600.00
		Letter of Credit	34,385.44
		Letter of Credit	27,719.50
MK044EM	MVR Star Lake Section 4 Exploration	Certificate of Deposit	8,317.00
MK045EM	Section 12 Humate Exploration	Letter of Credit	35,685.00
OT002MN	B.O.W. Mine	Letter of Credit	15,932.00
OT006EM	Cornudas Project	Certificate of Deposit	22,600.00
OT006MN	Iron Duke Mine	Certificate of Deposit	15,597.00
OT040EM	Cornudas Wind Mountain Project	Certificate of Deposit	58,826.12
RA001ME	Northstar Mine	Certificate of Deposit	11,099.07
RA003ME	Cullum Claims Mine	Letter of Credit	161,500.00
RA004RE	Rocky Mountain Mine	Letter of Credit	409,886.00
RA005RE	Velarde Mill	Surety Bond	287,821.00
RA006ME	General Pumice Mine	Required	15,000.00
SA001RE	El Cajete Mine	Letter of Credit	12,103.00
		Letter of Credit	78,747.00
SA004MN	Copar South Pit Mine	Letter of Credit	33,516.00

SA005EM	Rio Puerco Exploration Project	Certificate of Deposit	45,000.00
SA005ME	Menefee Mill	Certificate of Deposit	16,000.00
SA006MN	Copper City Mine	Cash	800.00
SA009MN	Eagle Mesa Mine	Letter of Credit	50,813.00
		Letter of Credit	7,270.00
SA011MN	San Luis Mine	Letter of Credit	35,100.00
SA015MN	H2 Screen Facility	Letter of Credit	28,170.00
SF001ME	San Pedro Mine and Mill	Certificate of Deposit	8,288.00
SF002RE	Cunningham Hill Mine	Trust	378,766.00
SI001ME	St. Cloud U.S. Treasury Mine	Certificate of Deposit	1,857.00
SI005MN	Burbank Canyon Mine	Certificate of Deposit	30,000.00
SI006RE	Zeolite Mine and Mill	Collateral Bond	157,719.00
SI025EM	Copper Flat Exploration 2 Project	Certificate of Deposit	241,710.00
SJ001MN	Morningstar Humate Plant	Certificate of Deposit	51,257.06
SO001RE	Socorro Mine and Mill	Letter of Credit	106,237.00
		Letter of Credit	688,166.00
SO002MN	Sais Quarry Mine	Certificate of Deposit	2,661.89
SO019EM	Vin Exploration	Certificate of Deposit	46,650.00
TA001RE	Questa Mine and Mill	Letter of Credit	66,918,125.00
		Letter of Credit	1,355,634.00
		Third Party Guarantee	200,754,376.00
TA002RE	El Grande Mine and Mill	Letter of Credit	711,497.00
TA003RE	U. S. Hill Mine	Letter of Credit	201,354.00
TA005RE	No Agua Mine and Mill	Surety Bond	1,152,687.00
VA001ME	Lucero Quarry Mine	Certificate of Deposit	24,515.00
Total:			693,615,072.92